

F|S

FABRICS-STORE.COM

*Our linen is nothing short of addicting*

# RHEA SUNDRESS



## SUMMER STYLE

*The tiered dress has been an eye-catcher in many spring and summer fashion shows this year, so we too decided to explore this trend in breezy linen!*

Multi-Sized Tiled/Layered PDF Pattern

866.620.2008 [ASK@FABRICS-STORE.COM](mailto:ASK@FABRICS-STORE.COM) [FABRICS-STORE.COM](http://FABRICS-STORE.COM)

---

# RHEA PATTERN

---

*As a woman can never have too many dresses, our new pattern is this gorgeous linen sundress with tiered skirt, Shirred back and two long straps that cross and tie in the back.*

*Duo-Sized for ladies 0/2 to 28/30*

*Simple step-by-step instructions on our blog  
“The Thread” at [Fabrics-Store.com](http://Fabrics-Store.com)*



Our lovely model Masha is wearing size 4/6 of this style with no adjustments.

# PATTERN DETAILS



## *Rhea Sundress*

Duo-Sizes: 0/2 to 28/30  
“Semi-Fitted”

#FabricStoreRheaPattern

## SEWING INSTRUCTIONS

This pattern is featured on our blog “The Thread” at [Fabric-Store.com](http://Fabric-Store.com). There you will find step-by-step photo instructions and can ask questions, post comments, or share your progress. Simply visit: [blog.fabric-store.com](http://blog.fabric-store.com) and enter “Rhea Pattern” in the search box.

## SIZING & YARDAGE

Ladies Size Guide Based on Body Measurements in Inches

Size	0/2	4/6	8/10	12/14	16/18	20/22	24/26	28/30
Bust	33-34	35-36	37-38	39-40	42-44	46-48	50-52	54-56
Waist	25-26	27-28	29-30	31-32	34-36	38-40	42-44	46-48
Hip	35-36	37-38	39-40	41-42	44-46	48-50	52-54	56-58

Finished Garment Measurements - Approximate in Inches

Size	0/2	4/6	8/10	12/14	16/18	20/22	24/26	28/30
Bust*	36.5	38.5	41	43.5	47.5	51.5	56	60.5
Waist	26	28	30.5	33	37	41	45.5	50
Hips	48	50	52.5	55	59	63	67.5	72
Skirt Length	25	25	25	25	25	25	25	25

\*Note there will be added room in the Bust & Hips due to the shirred back panel.

Estimated Yardage - 54" Width Linen

Size	0/2	4/6	8/10	12/14	16/18	20/22	24/26	28/30
Yardage*	2 yards				3 yards			

\*Allow up to 10% extra fabric for shrinkage.

ALL SEAM ALLOWANCES ARE INCLUDED AND NOTED ON THE PATTERN AND IN THE TUTORIAL.

## “Rhea” Sewing Pattern

For instructions visit: [blog.fabrics-store.com](http://blog.fabrics-store.com) and enter “Rhea Pattern” in the search box.

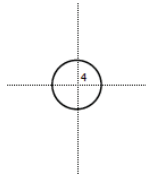
2 Inch  
Square to  
Check Print  
Accuracy

**Layered PDF:**  
This pattern has embedded  
layers so you can print all  
sizes or a single size. See  
your .pdf viewers 'Layers'  
menu.

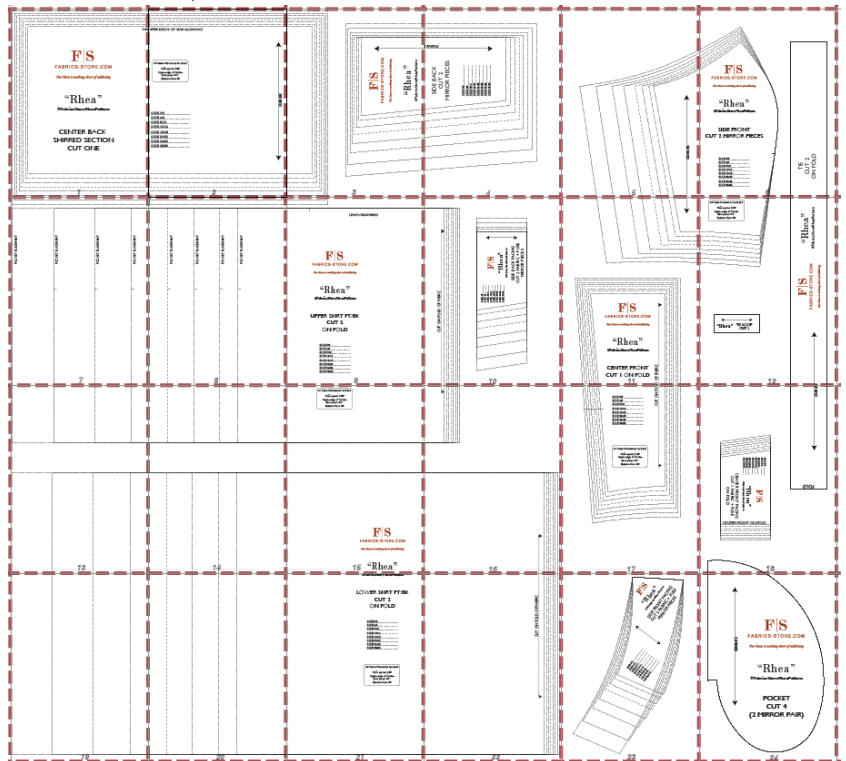
**PRINT ONLY THIS PAGE FIRST TO CHECK SCALE**

**IMPORTANT! PRINT AT ACTUAL SIZE, 100%, OR NO  
SCALING.**

*Formatted for paper sizes A4 and Letter.*



Simply overlap the page margins and  
align the markings in each corner to  
complete the circle and tape in place.



**All Seam Allowances Included**

Main seams: 3/8"  
Upper edge of Center  
Back piece: 1/2"  
Bottom Hem: 1"

For instructions visit: [blog.fabrics-store.com](http://blog.fabrics-store.com) and enter “Rhea Pattern” in the search box.

F|S

FABRICS-STORE.COM

*Our linen is nothing short of addicting*

“Rhea”

#FabricsStoreRheaPattern

CENTER BACK  
SHIRRED SECTION  
CUT ONE

UPPER EDGE IS 1/2" SEAM ALLOWANCE

**All Seam Allowances Included**

Main seams: 3/8"  
Upper edge of Center  
Back piece: 1/2"  
Bottom Hem: 1"

SIZE 0/2 \_\_\_\_\_

SIZE 4/6 \_\_\_\_\_

SIZE 8/10 \_\_\_\_\_

SIZE 12/14 \_\_\_\_\_

SIZE 16/18 \_\_\_\_\_

SIZE 20/22 \_\_\_\_\_

SIZE 24/26 \_\_\_\_\_

SIZE 28/30 \_\_\_\_\_



GRAINLINE



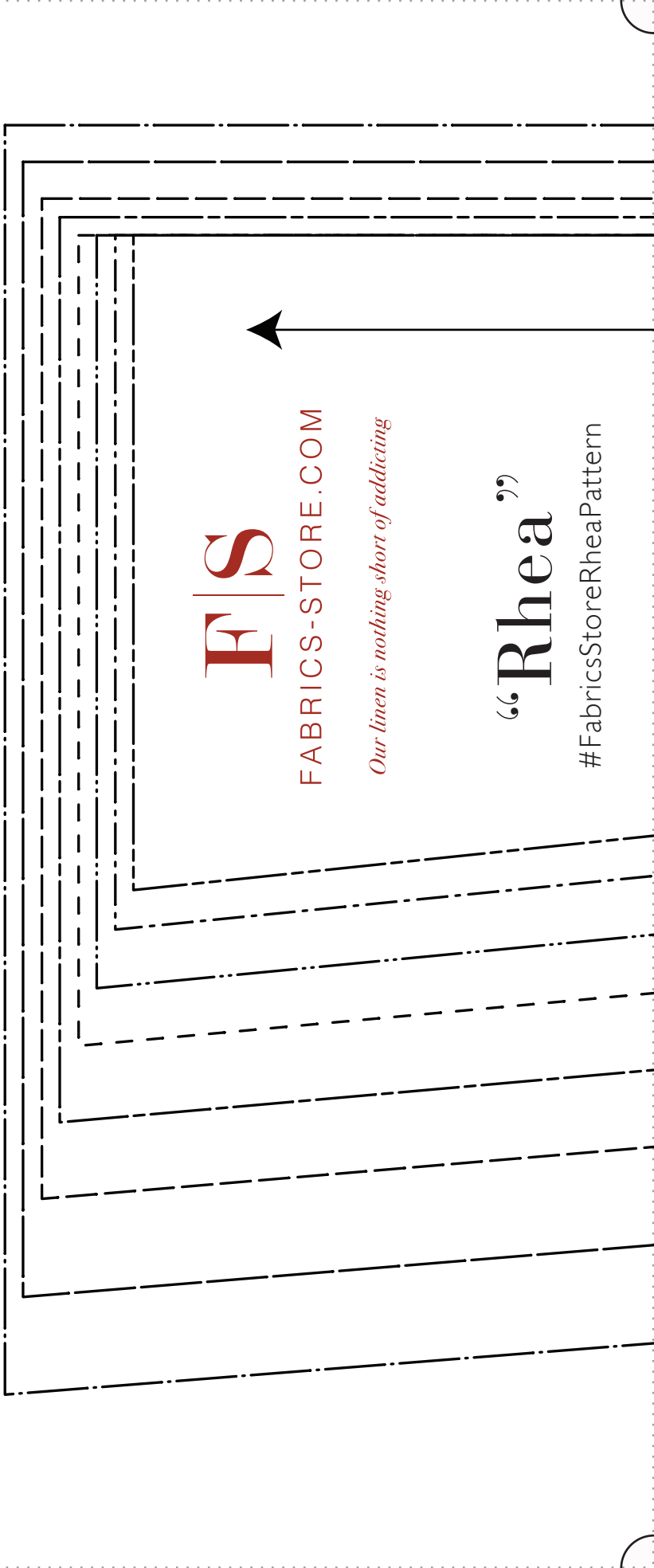
F|S

FABRICS-STORE.COM

*Our linen is nothing short of addicting*

“Rhea”

#FabricStoreRheaPattern

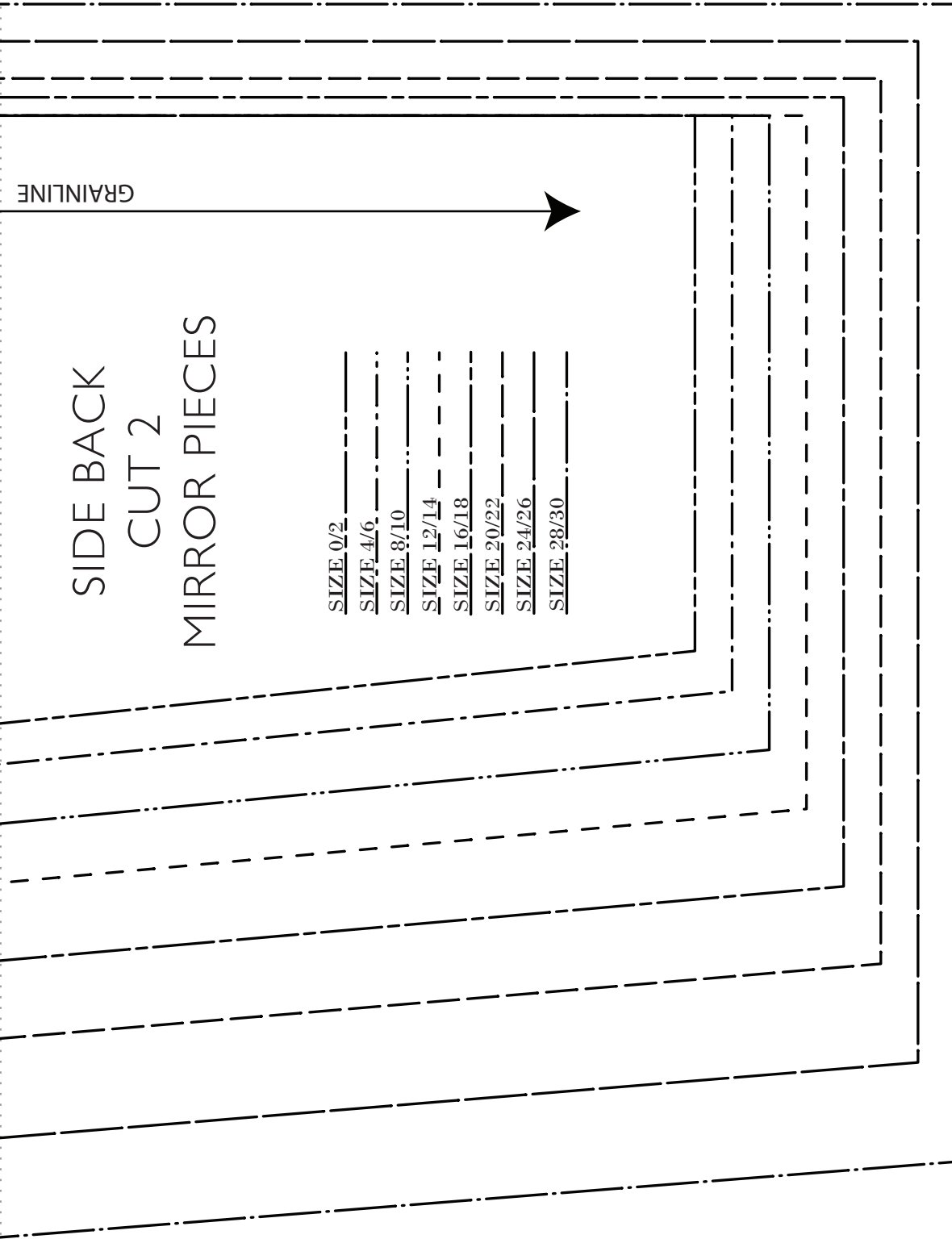


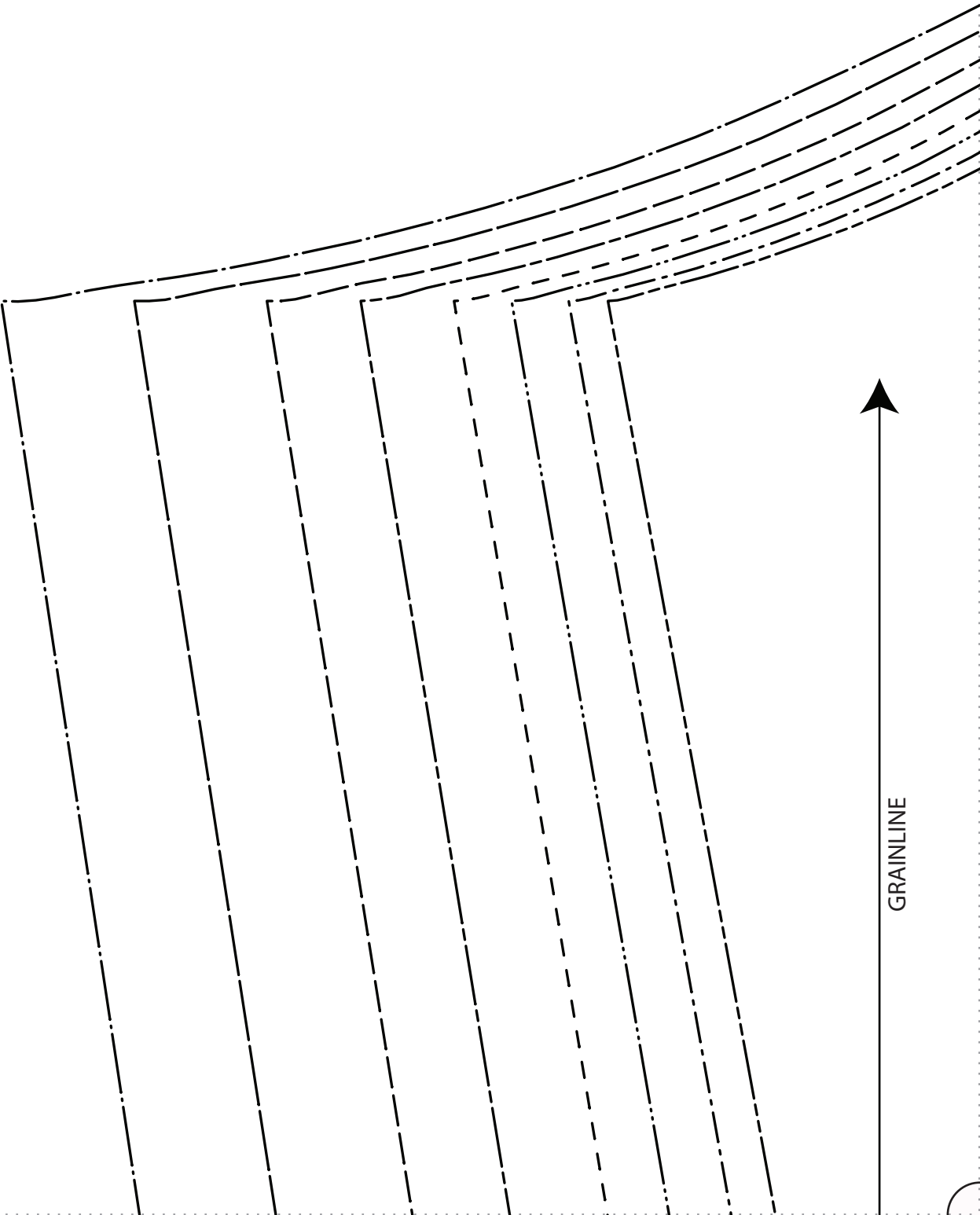


SIDE BACK  
CUT 2  
MIRROR PIECES

- SIZE 0/2 \_\_\_\_\_
- SIZE 4/6 \_\_\_\_\_
- SIZE 8/10 \_\_\_\_\_
- SIZE 12/14 \_\_\_\_\_
- SIZE 16/18 \_\_\_\_\_
- SIZE 20/22 \_\_\_\_\_
- SIZE 24/26 \_\_\_\_\_
- SIZE 28/30 \_\_\_\_\_

GRAINLINE





GRAINLINE



F | S

FABRICS-STORE.COM

*Our linen is nothing short of addicting*

“Rhea”

#FabricStoreRheaPattern

SIDE FRONT  
CUT 2 MIRROR PIECES

SIZE 0/2 \_\_\_\_\_

SIZE 4/6 \_\_\_\_\_

SIZE 8/10 \_\_\_\_\_

SIZE 12/14 \_\_\_\_\_

SIZE 16/18 \_\_\_\_\_

SIZE 20/22 \_\_\_\_\_

SIZE 24/26 \_\_\_\_\_

SIZE 28/30 \_\_\_\_\_



TIE  
CUT 2  
ON FOLD

POCKET PLACEMENT

POCKET PLACEMENT

POCKET PLACEMENT

POCKET PLACEMENT

POCKET PLACEMENT

POCKET PLACEMENT

POCKET PLACEMENT

POCKET PLACEMENT

LEAVE UNGATHERED (FOR BACK SKIRT ONLY)

F | S

FABRICS-STORE.COM

*Our linen is nothing short of addicting*

“Rhea”

#FabricStoreRheaPattern

UPPER SKIRT FT/BK  
CUT 2  
ON FOLD

SIZE 0/2 \_\_\_\_\_

SIZE 4/6 \_\_\_\_\_

SIZE 8/10 \_\_\_\_\_

SIZE 12/14 \_\_\_\_\_

SIZE 16/18 \_\_\_\_\_

SIZE 20/22 \_\_\_\_\_

SIZE 24/26 \_\_\_\_\_

SIZE 28/30 \_\_\_\_\_

CUT ON FOLD OF FABRIC



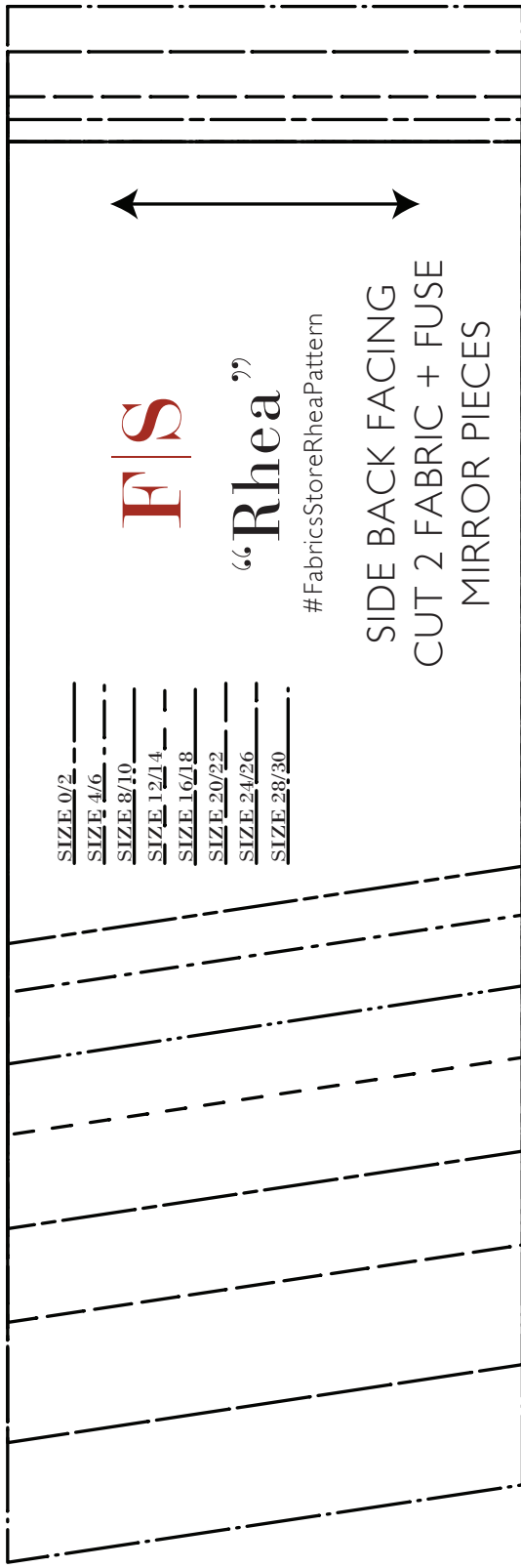
- SIZE 0/2
- SIZE 4/6
- SIZE 8/10
- SIZE 12/14
- SIZE 16/18
- SIZE 20/22
- SIZE 24/26
- SIZE 28/30

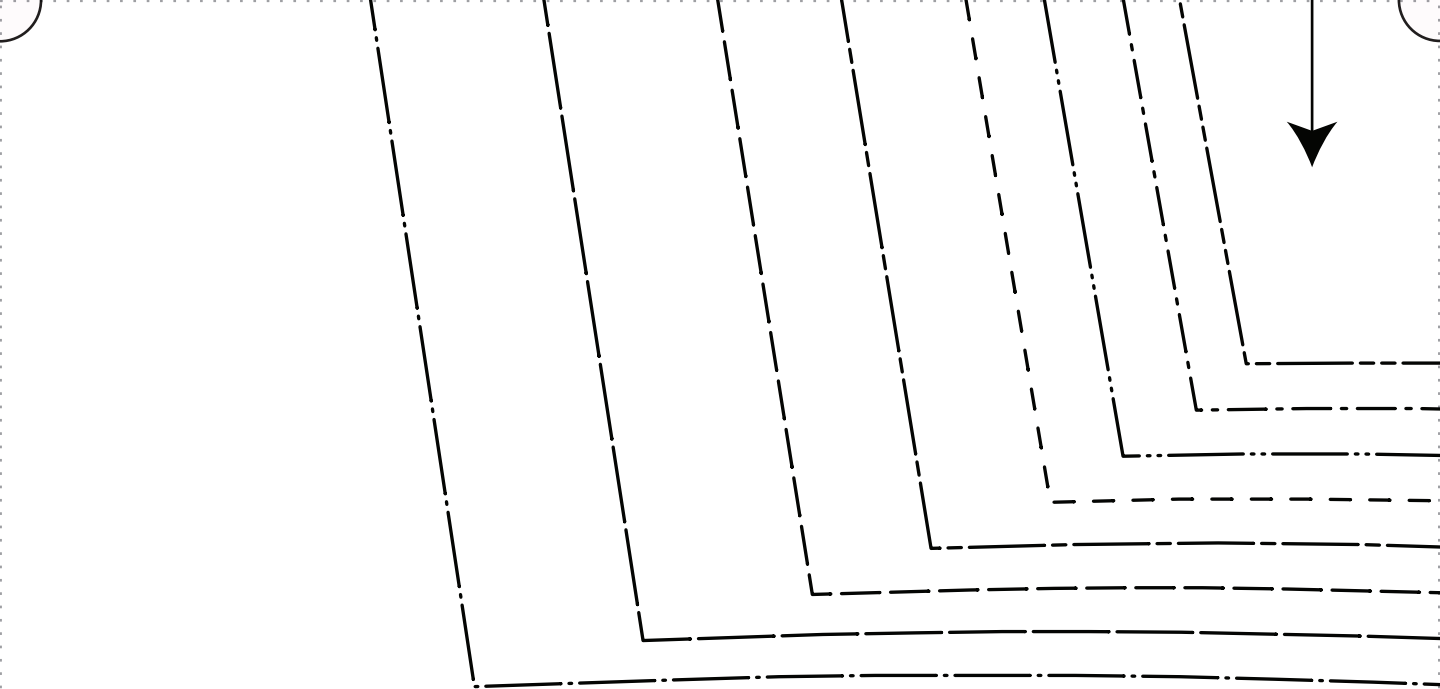
F|S

“Rhea”

#FabricsStoreRheaPattern

SIDE BACK FACING  
CUT 2 FABRIC + FUSE  
MIRROR PIECES





F|S

FABRICS-STORE.COM

*Our linen is nothing short of addicting*

“Rhea”

#FabricStoreRheaPattern

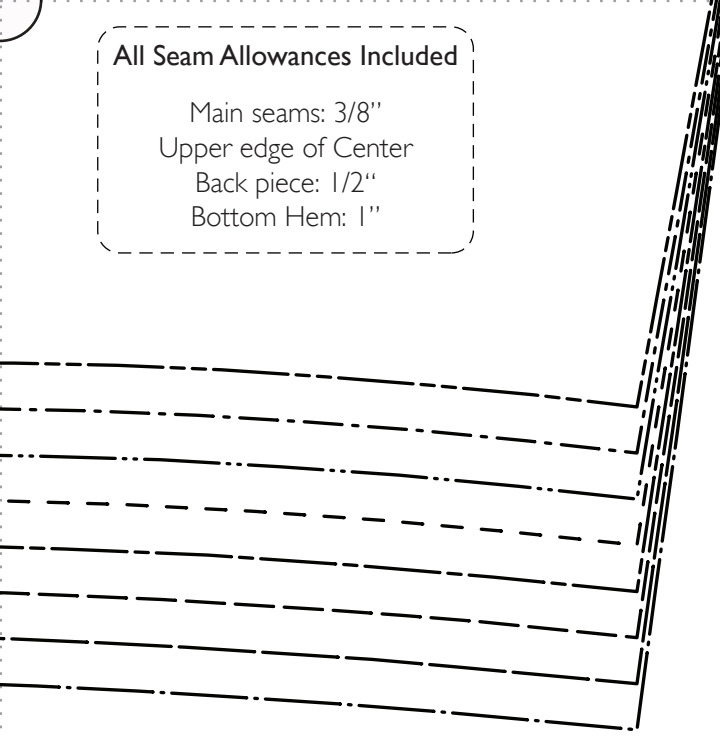
CENTER FRONT  
CUT 1 ON FOLD

D OF FABRIC



All Seam Allowances Included

Main seams: 3/8"  
Upper edge of Center  
Back piece: 1/2"  
Bottom Hem: 1"



← →  
"Rhea" TIE LOOP  
CUT 2

F|S

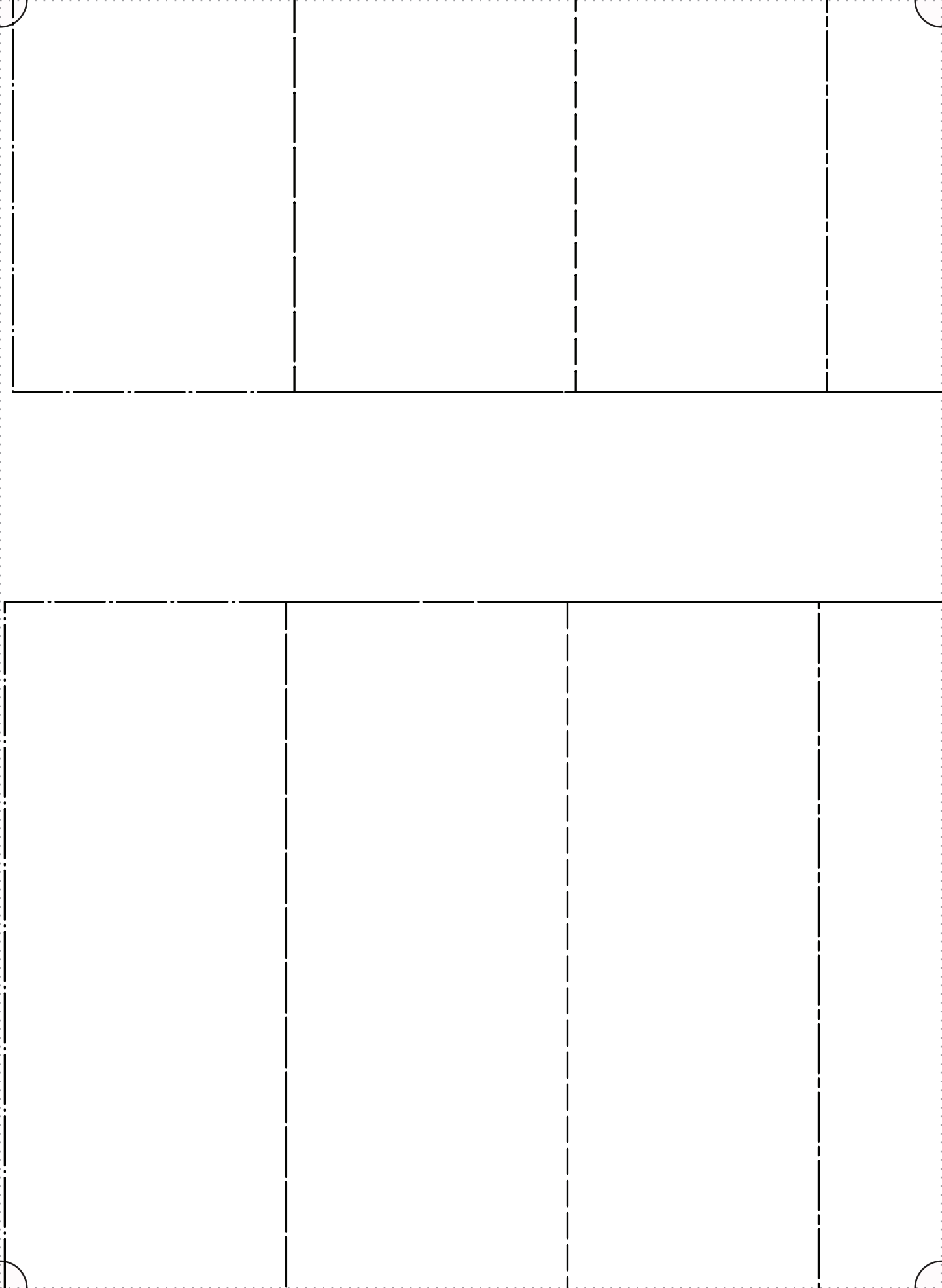
FABRICS-STORE.COM

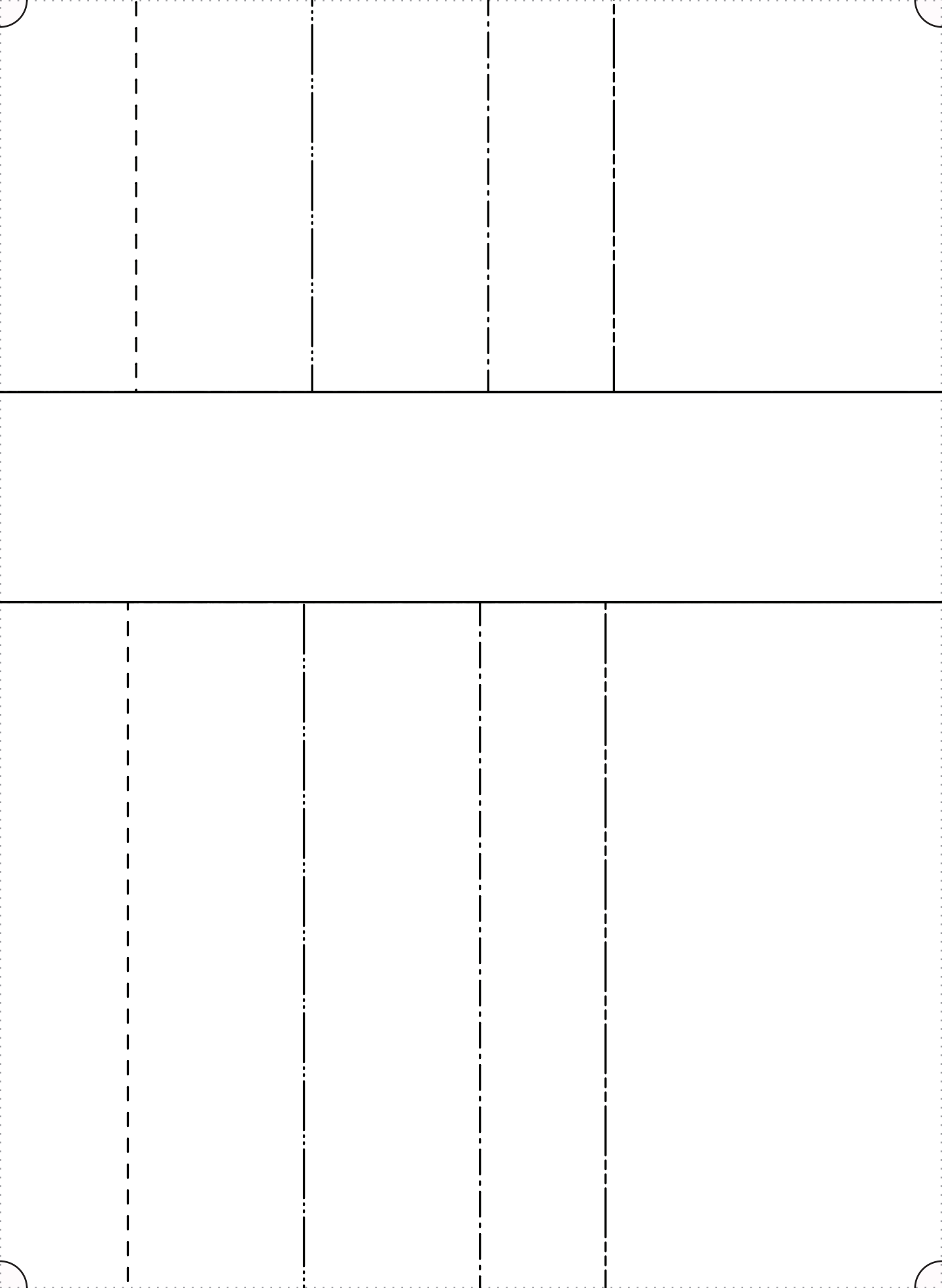
*Our linen is nothing short of addicting*

"Rhea"

#FabricStoreRheaPattern

TIE





All Seam Allowances Included

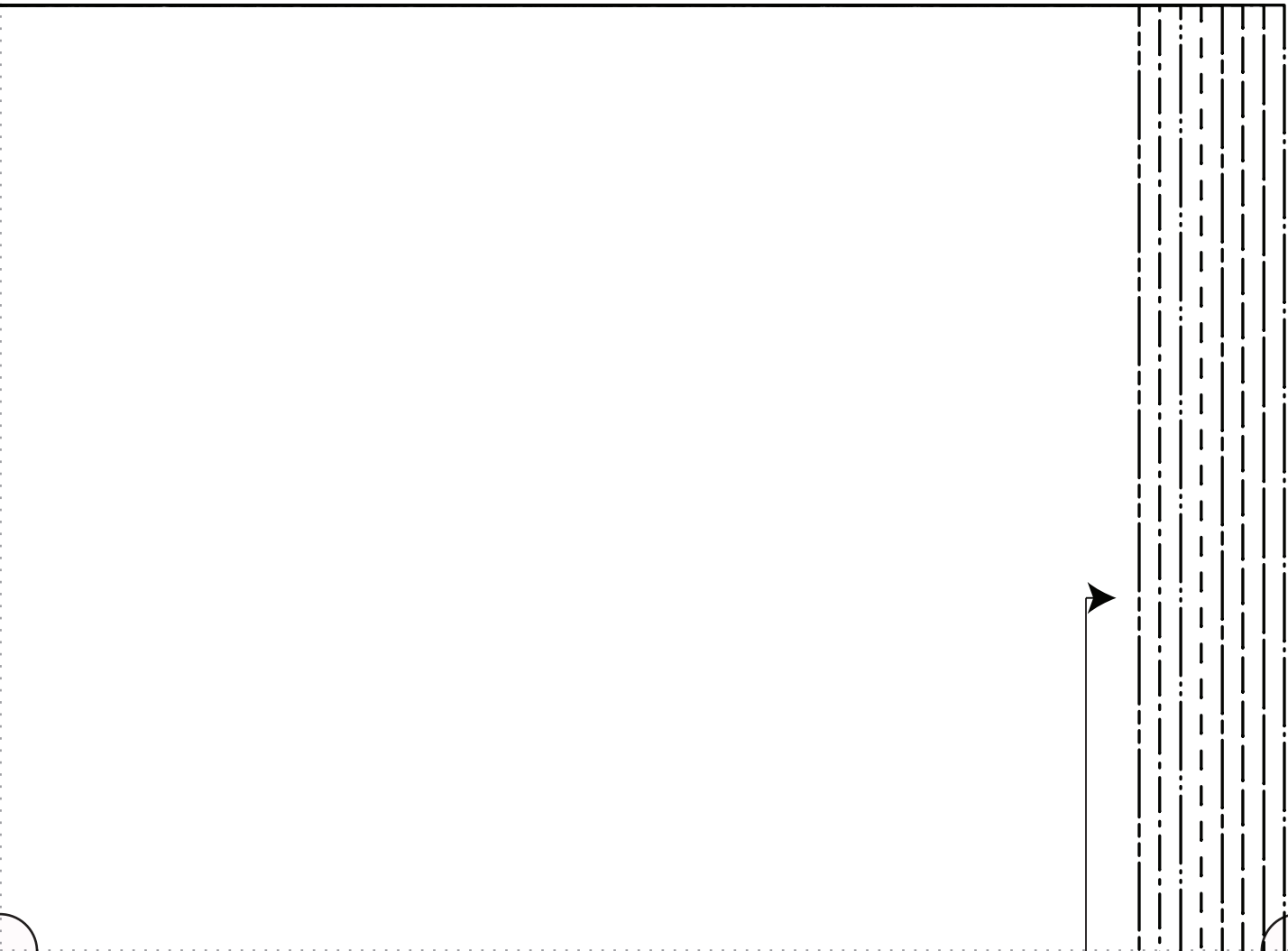
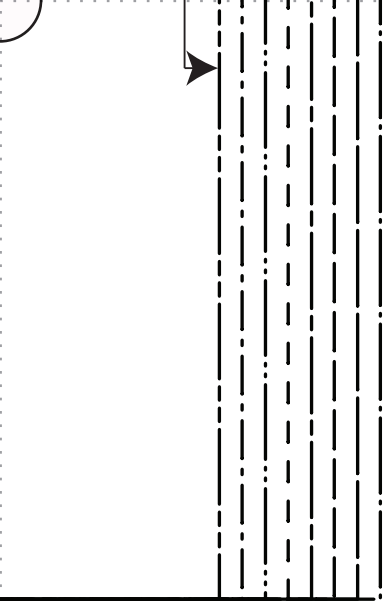
Main seams: 3/8"  
Upper edge of Center  
Back piece: 1/2"  
Bottom Hem: 1"

F | S

FABRICS-STORE.COM

*Our linen is nothing short of addicting*

“Rhea”



SIZE 0/2 \_\_\_\_\_

SIZE 4/6 \_\_\_\_\_

SIZE 8/10 \_\_\_\_\_

SIZE 12/14 \_\_\_\_\_

SIZE 16/18 \_\_\_\_\_

SIZE 20/22 \_\_\_\_\_

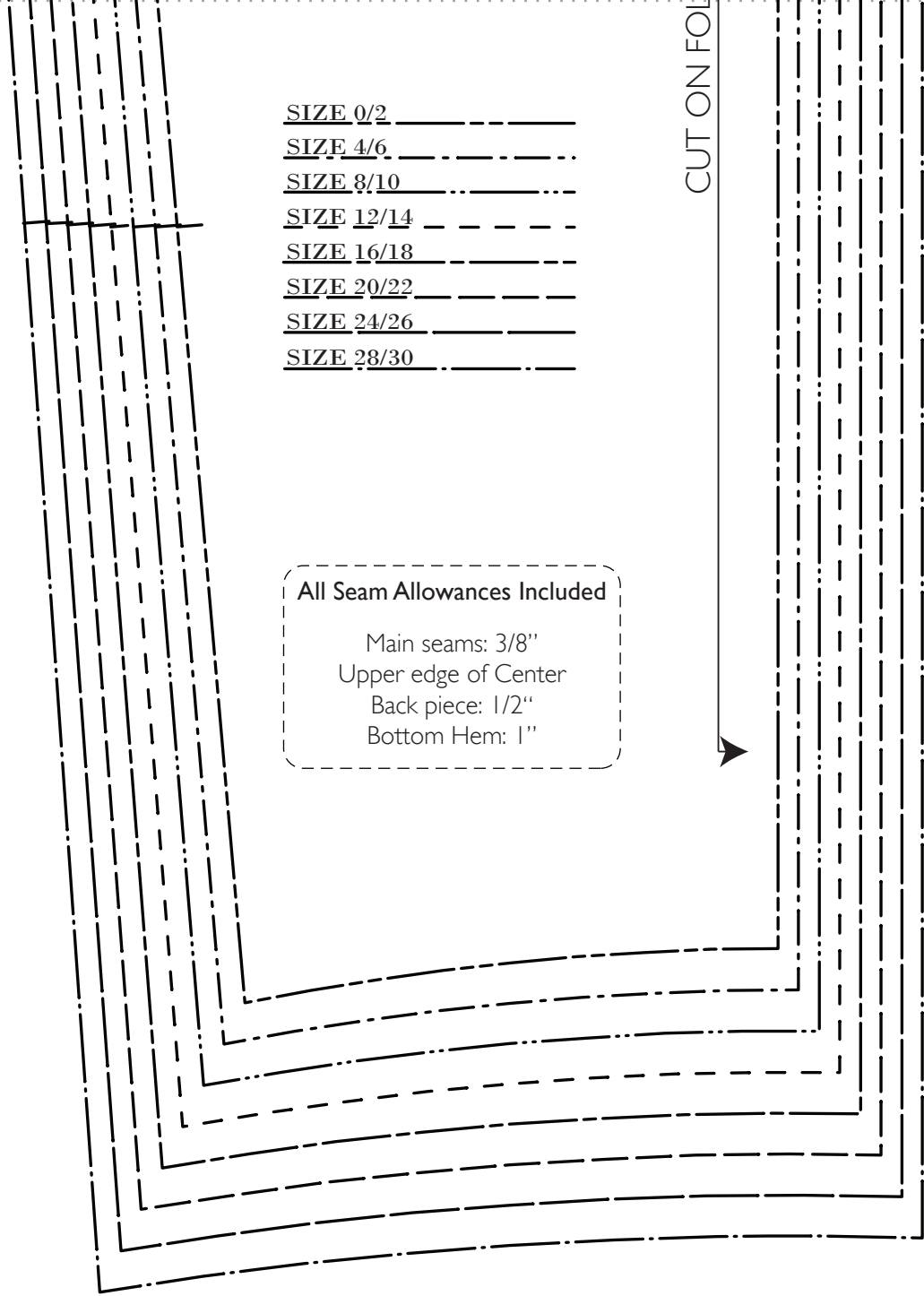
SIZE 24/26 \_\_\_\_\_

SIZE 28/30 \_\_\_\_\_

CUT ON FOLD

All Seam Allowances Included

- Main seams: 3/8"
- Upper edge of Center
- Back piece: 1/2"
- Bottom Hem: 1"



GRAINLIN



FOLD

SIZE 0/2  
 SIZE 4/6  
 SIZE 8/10  
 SIZE 12/14  
 SIZE 16/18  
 SIZE 20/22  
 SIZE 24/26  
 SIZE 28/30

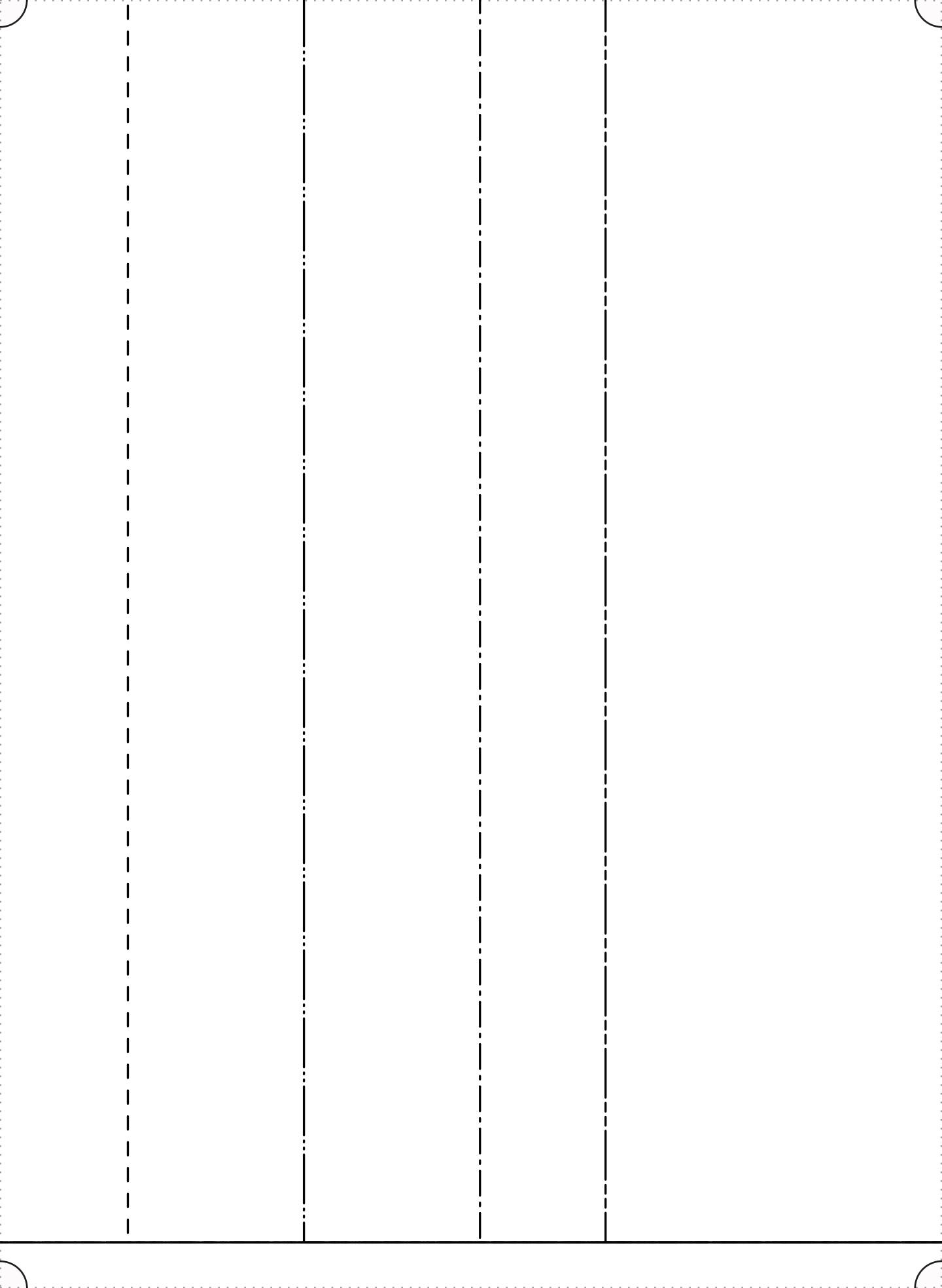
**F|S**  
 “Rhea”  
 #FabricStoreRheaPattern

CENTER FRONT FACING  
 CUT 1 FABRIC + FUSE  
 ON FOLD

CENTER FRONT ON FOLD







LOWER SKIRT FT/BK  
CUT 2  
ON FOLD

SIZE 0/2 \_\_\_\_\_

SIZE 4/6 \_\_\_\_\_

SIZE 8/10 \_\_\_\_\_

SIZE 12/14 \_\_\_\_\_

SIZE 16/18 \_\_\_\_\_

SIZE 20/22 \_\_\_\_\_

SIZE 24/26 \_\_\_\_\_

SIZE 28/30 \_\_\_\_\_

**All Seam Allowances Included**

Main seams: 3/8"  
Upper edge of Center  
Back piece: 1/2"  
Bottom Hem: 1"

CUT ON FOLD OF FABRIC



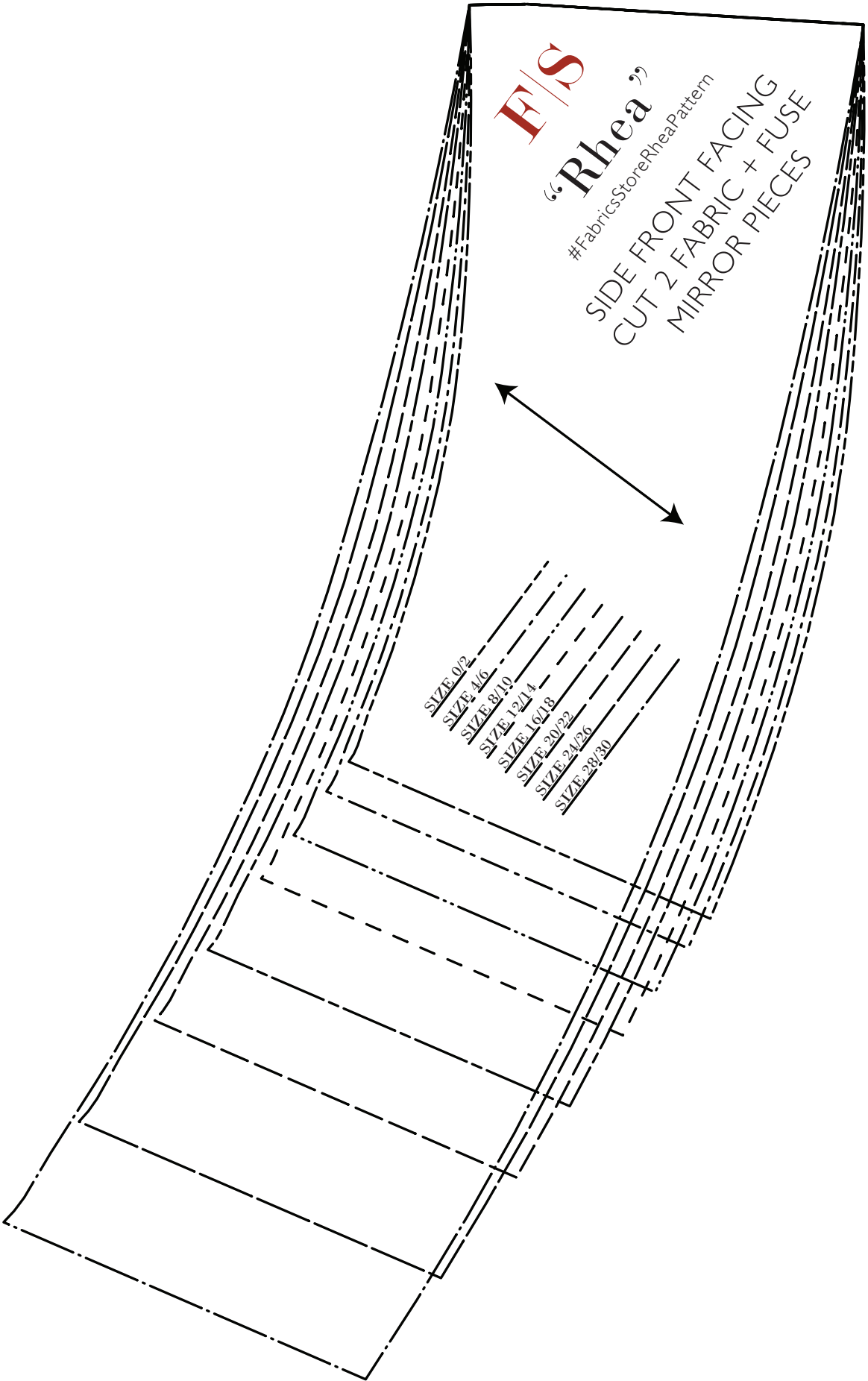
**F/S**

**“Rhea”**

#FabricsStoreRheaPattern

SIDE FRONT FACING  
CUT 2 FABRIC + FUSE  
MIRROR PIECES

- SIZE 0/2
- SIZE 4/6
- SIZE 8/10
- SIZE 12/14
- SIZE 16/18
- SIZE 20/22
- SIZE 24/26
- SIZE 28/30





F|S

FABRICS-STORE.COM

*Our linen is nothing short of addicting*

“Rhea”

#FabricStoreRheaPattern

POCKET  
CUT 4  
(2 MIRROR PAIR)

---

# *Thank you*

---

*We work hard on making our patterns beautiful enough to meet your standards.*

*If you feel like sharing praise or helpful criticism, please send us your comments to [ask@fabrics-store.com](mailto:ask@fabrics-store.com)*